

A blue-tinted photograph of a solar panel array on a roof, showing the grid pattern of the panels and the mounting brackets. The image is overlaid with a large, semi-transparent blue circle.

Your projects,
our products!

Intelligent solutions for
roofs and solar systems.

RoofTech GmbH – Master distributor and wholesalers

RoofTech GmbH, an owner-managed company, has been the exclusive and very successful distributor and wholesaler of S-5!® products in Europe since 2008.

Furthermore, we sell products from BirdBlocker, nVent-Caddy and our own accessories for PV mounting and snow retention systems. Our recognized good customer service, extensive warehousing and fast order processing are the basis for many years of customer satisfaction.

Our services for your Projects

- ✓ Product training
- ✓ Free planning and calculation
- ✓ Free support with initial installation
- ✓ Large stock and fast order processing
- ✓ Pre-assembly and individual packaging

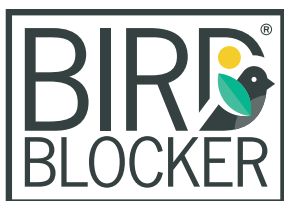


It is particularly important to us

to be able to offer you a specially selected and exclusive product range. It is one of our strength to have all products for you on stock. In addition to digital options, we continue to rely on personal contact for order processing and have been at your side for more than 15 years, both professionally and in an advisory capacity.

Falk Magnus Strobel
(CEO)

Our premium partners



PV-Bird-Protection

To protect the solar system from nesting birds.



PV-Direct-Attach-Solution

Standing seam clamps and PV direct mounting.



Cable Management

Professional and sustainable installation of cable trays and conduit

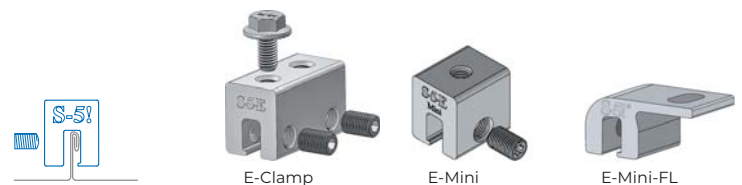
The S-5!® Clamps with two set screws, M8 thread(s) on the top and one M8x16 stainless steel screw with locking serration, are used for very high loads such as e.g. for single fastenings, fall protection and the S-5!® ColorGard snow guard system.

The S-5!® Minis with one set screw and M8 thread or with a flange and slotted hole (FL) are used in applications where rigid objects, such as rails, are to be fixed to the seams with several clamps.

S-5!® E-Clamps for Double Folded Seams

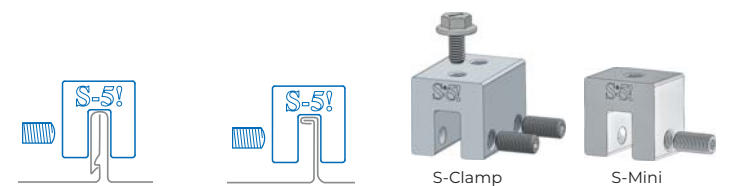
The E-clamps made of Aluminium have an opening slot of 7 mm and offer mounting solutions on double standing seam roofs.

Official approved by the DIBt.: Z-14.4-719.



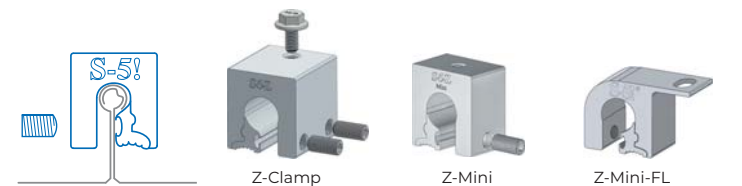
S-5!® S-Clamps for Snap Lock and Angle Seams

With a bigger opening slot of 14 mm the S-Clamps are extremely versatile for angle seams and a big number of industrial seams such as Snap-Lock or Snap-together profiles from Fischer-Kliptec, Schlebach, Prive-Stylinov, Ruukki or similar.



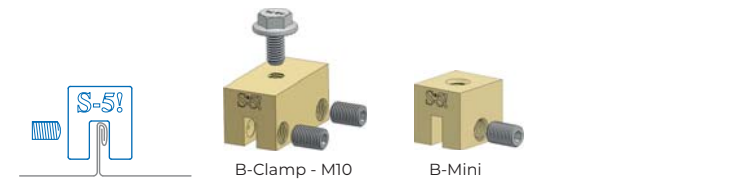
S-5!® Z-Clamps for Round Bulb Seams

Z-Clamps are specially developed to fit profiles having round "bulb" seams with a max. 22 mm diameter such as profiles of Kalzip®, Bemo®, Aluform, Euroseam® or Kingspan. **Official approved by the DIBt.: Z-14.4-719.**



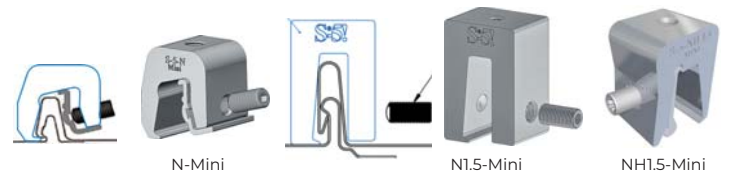
S-5!® B-Clamps for Copper Roofs

The B-clamps with an opening slot of 6 mm are the perfect choice for copper roofs with double standing seam. The B-clamps are **made of Brass** and thus enable material-compatible installations on copper roofs.



S-5!® N-Mini and N1.5-Mini Clamps for Nail Strip Seams

The N-Mini clamp is suitable for 1 inch (25 mm) high and the N1.5-Mini clamp and NH1.5-Mini clamp for 1.5 inch (38 mm) high Nail-strip profiles such as those from Schlebach or similar.



The S-5!® H-Mini for larger Horizontal Profiles

The H-Mini clamp is developed for different types of larger horizontal seams up to 32 mm width.



The S-5!® R465 Mini Clamp

is specially designed for the profiles Zambelli RIB-Roof 465, Domico GBS and similar. The exact fit with the set screws on both sides are the basis for the high holding forces.



S-5!® RC clamp for the Riverclack® Profi

With the two-part RC clamp, different superstructures can be attached in a stable and penetration-free manner.



All not stocked S-5!® products can be imported from S-5!, USA, after customer request – even in small quantities and in short time with air freight. If you would like a quote, further information or advice on a project, please do not hesitate to contact us.

Rail Systems perfect installed

Professional photovoltaic installation with S-5!®



In contrast to plagiarism and conventional seam clamps, only the original S-5!® Clamps are all multiple tested by third-party accredited test-labs. The S-5!® E- and Z-Clamps families have in addition the official technical approval by the DIBt: abZ aBG Z-14.4-719

The S-5!® Mini clamps with their high holding forces are usually best suited for fastening PV modules with rail systems. Many well-known manufacturers and distributors of mounting systems have been successfully using the S-5!® clamps with their rail systems worldwide for years.

The **S-5!® Mini clamps with M8 thread** can be used for C-rails or combined with different adapter plates for mounting rail systems with bottom or side screw channel.

The **E-Mini-FL** for double folded standing seam and **Z-Mini-FL** for round bulb seams are the right choice for mounting rail systems with screw channel on the underside. They are fastened with hammerhead screws through the slotted hole in the flange.



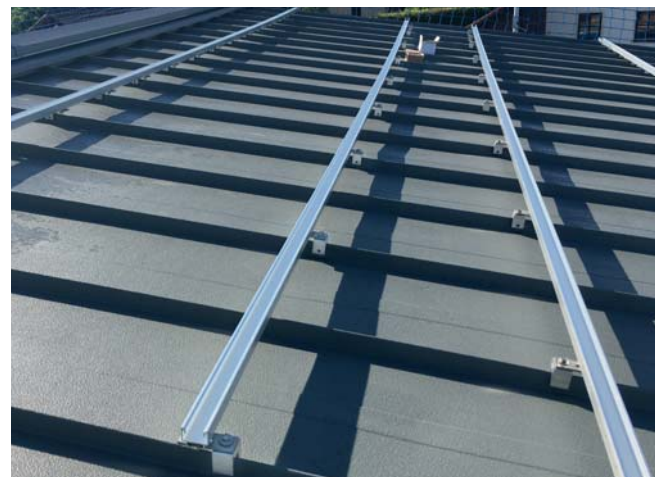
Rail with screw channel underneath stable mounted on S-5!® E-Mini-FL clamp.



S-5!® Z-Mini for round bulb seams mounted under a C-rail.



Rail with side screw channel mounted with angle adapter on S-5!® E-Mini.



S-5!® Photovoltaic Mounting Solution

S-5!® PVKIT® Direct-Attach-Solution without rails

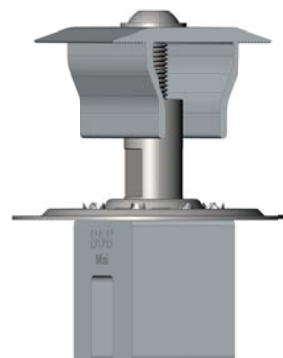


With the **S-5!® PVKIT®** and the **S-5!® Mini clamps** (with M8 thread), framed PV modules with frame heights of 30 mm to 46 mm can be mounted directly on standing seam roofs without complex and heavy rail systems.

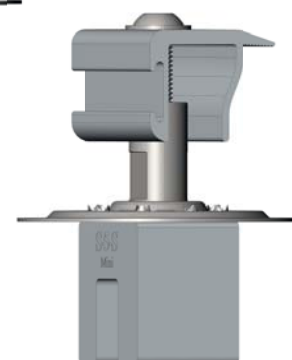
Das S-5!® PVKIT® MidGrab consists a module clamp made of aluminium, pre-assembled on the stainless steel mounting bar and a module support disc made of stainless steel.

Advantages:

- ✓ Easy transport, no cuttings or unusable remains.
- ✓ Pre-assembled module clamp saves time and money.
- ✓ Flat screw head provides a smooth and clean surface.
- ✓ Less wind loads due to roof-parallel mounting of the modules.
- ✓ Only one module is fixed crosswise to the seams – therefore less cross-movements and stresses for the metal roof.
- ✓ Up to 80% weight saving compared to conventional rail systems.
- ✓ UL 2703 listed ground path is automatic.



S-5!® PVKIT MidGrab mounted on S-5!® Mini clamp



S-5!® PVKIT EdgeGrab mounted on S-5!® Mini clamp



The MidGrab module clamp can be used as Middle- and End-Clamp.



BirdBlocker - To protect the solar system from nesting birds



For all these reasons, the solar system should be protected from nesting birds:

- Soiling of the solar system and the roof by nesting and bird droppings is a major nuisance and reduces electricity production considerably.
- The nests disrupt the natural underside ventilation of the solar system. This results in a lower energy yield and an increased risk of fire.
- Damage to the cables and to the modules can cause malfunctions.

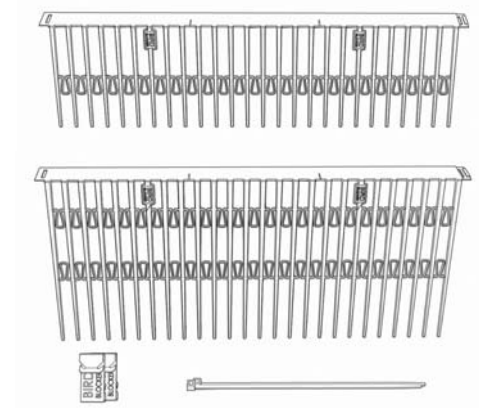


BirdBlocker hinders and disturbs the birds very much when they try to get under the solar system.

It is important that the BirdBlocker strips are installed around the solar installation and that the needles of the BirdBlocker stand firmly on the roof surface to provide resistance. As the fastening with the stainless steel clips does not damage the PV module, the warranty remains intact!

The advantages over conventional solutions:

- ✓ **Two needle lengths (12,5 cm and 20 cm)** for different distances between module and roof surface.
- ✓ **Simple, even retrofitting, installation** with stainless steel fastening clips.
- ✓ **No scratching or damage** to the roof surface.
- ✓ **UV-resistant HDPE plastic** and recyclable.
- ✓ **TÜV tested:** UV resistance, product safety, REACH.
- ✓ **10-year product guarantee.**



BirdBlocker for Protection of the PV-System

from nesting birds

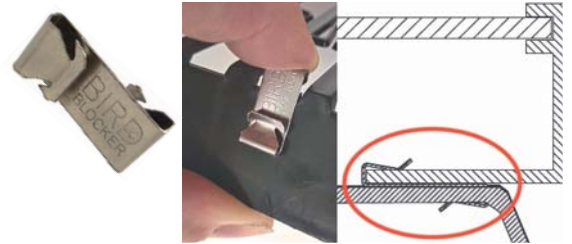


BirdBlocker - installation without screwing, drilling or gluing.

We recommend installing the BirdBlocker preventively, i.e. at the same time as the PV installation (retrofitting is also easily possible). BirdBlocker fits on 95% of common modules and sub-structures (retractable systems are unfortunately not suitable).

Standard stainless steel fastening clip

The BirdBlocker strips can be attached with the standard stainless steel fastening clips to 90% of the modules that have an inner flat (at least 10 mm wide) profile with frame thicknesses of 1 - 2 mm.

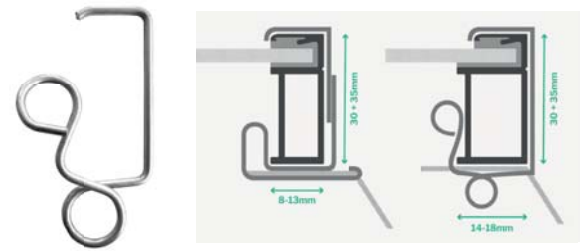


Universal clamps for box frames

However, there are some modules with box frames on the short inside that do not have a sufficient frame plate, for which special universal clamps with the following dimensions (width x height) have been designed:

8-13 x 30 mm and 8-13 x 35 mm

14-18 x 30 mm and 14-18 x 35 mm



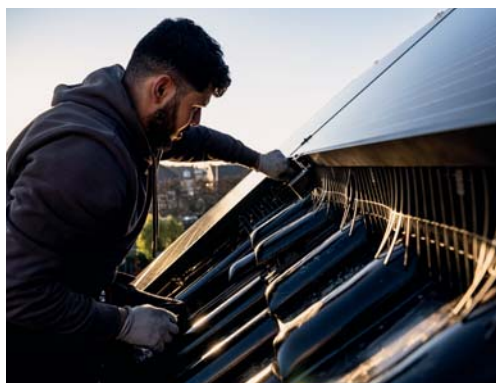
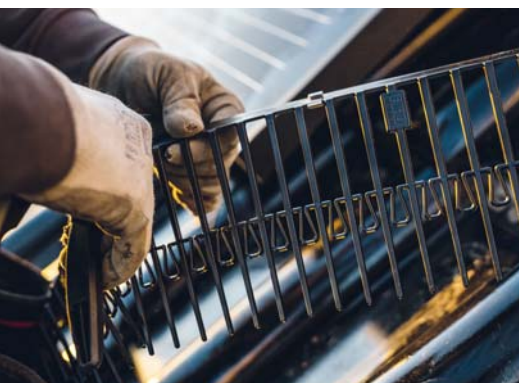
BirdBlocker Installation-Tool

Using the BirdBlocker installation tool makes it easier to attach the BirdBlocker strips to the inner module frame. This allows the BirdBlocker strips to be pushed onto the module frame with the pre-installed standard fastening clips.



Pre-assembled mounting clips

Optionally available: BirdBlocker strips with 4 pre-assembled clips. This means that this work step can be skipped. This saves considerable preparation time and installation effort.



Multi-Trapezoidal Bracket MTH



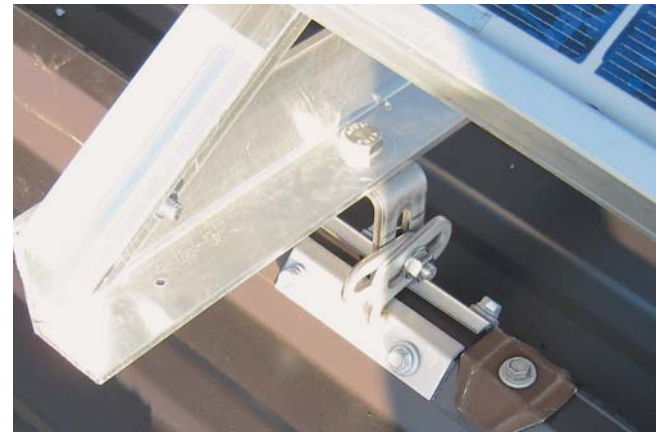
Flexibly adaptable to many trapezoid formats

The stable Multi-Trapezoidal Bracket MTH, made of 5mm stainless steel, with mounting bracket and self-adhesive sealing strips, can be flexibly adapted and mounted on many shapes of trapezoidal sheet metal and sandwich profiles with an upper cord width up to max. 43 mm (according the approval). Fastening with four approved thin sheet metal screws with sealing washers.

- ✓ **Very stable and corrosion-resistant:** Material 5 mm stainless steel V2A.
- ✓ In contrast to rigid brackets, it **can be flexibly adapted** to many trapezoidal shapes.
- ✓ **Height-adjustable** mounting bracket with two M11 slotted holes - thus optimally adjustable in height in order to avoid cramping.
- ✓ **Self-adhesive sealing strips** on the innerside of the mounting bracket ensure mounting fixation and optimal tightness.
- ✓ **Flexible attachment** of mounting rails, the S-5!® PVKIT®, cable conduit, maintenance routes, etc.



Official tested and approved by the DIBt No. Z-14.4-706.



Solarud Nano Waterdrain Clip



The Solarud Nextgen Waterdrain Clip prevents the accumulation of water and dust by draining the standing water on the lower frame side of the solar module.



- ✓ Ideal for PV module installations with low inclination (up to 15°).
- ✓ Four flexible plastic wings allow flexible adjustment to frame heights between 28 mm and 40 mm (and module depths between 8 and 11 mm).
- ✓ The Solarud Clip has a special anti-clog design that prevents clogging of the drain due to deposits of dust and sand.
- ✓ Robust, UV resistant and temperature resistant up to 105° C.
- ✓ 6-year product guarantee.

S-5!® ColorGard® and RoofTech Single- or Double-Tube holders

RoofTech Single-Tube holder (RT-SER)

Snow retention with the RoofTech Single-Tube holder made of 2.5 mm stainless steel - mounted on the S-5! Mini clamps - is the classic snow retention with a standard 32/2 mm round tube.

RoofTech Double-Tube holder (RT-SDR)

With the RoofTech Double-Tube holder made of 3 mm stainless steel, mounted on two S-5! mini clamps that fit the seam, it is often possible to support significantly higher loads than with conventional double-tube snow retention systems.

Please note:

Due to the leverage effect, double-tube snow retention rows should only be used in conjunction with overlying snow retention rows.

S-5!® ColorGard® is the stable snow retention in the color of the metal roof.

This is achieved by inserting a metal strip of the roofing into the ColorGard snow retention rail. This eliminates the need for time-consuming and expensive powder coating as with conventional snow retention systems.

The advantages over conventional solutions:

- ✓ Simple installation and attractive appearance.
- ✓ The snow retention tube of the RT-SER is optimally positioned directly on the seam.
- ✓ Free sliding of the pipe in the holder: no constraints across the seam.
- ✓ Angled installation is also easy to realize with the RT-SER.



Single-Tube holder on S-5! Z-Mini clamp for round bulb seam



Double-Tube holder on S-5! E-mini clamp for double standing seam



S-5!® ColorGard® mounted on S-5!® clamps with two set screws



Professional installation of cable trays and pipes

PV systems and other installations can only remain functional in the long term if cables and lines are routed correctly on the flat roof.

The particular advantages:

- ✓ **Easy to transport onto the roof** due to low weight. Packed in cardboard boxes.
- ✓ **Easy and quick to attach** with clips or pins in the holes on the top of the feet. No time-consuming drilling and screwing.
- ✓ **UV-stable, corrosion-resistant** and durable: material PE and PP.
- ✓ Can withstand **static loads** from 1,330N up to 6,670N (136 kg - 680 kg).
- ✓ **Optimized load distribution**, minimized point loading and notch effect.
- ✓ **Protection of the roof cladding** by foam rubber on the underside of the feet.
- ✓ **Compatible with bitumen and plastic roofing membranes, metal roofs, etc.**
- ✓ **Mounting level optimally 102 mm** above the roof surface.



Pipe and conduit laying with Tool-Free clamps.



Mesh tray - easily and stably mounted with Tool-Free clamps.



Cable tray made of perforated sheet - fastened with Tool-Free Pins.

Caddy Solar Cable Clip

- ✓ For simple and quick attachment of two cables with an outer diameter of 5 - 7 mm.
- ✓ For mounting on module frames with 1.5 - 2 mm sheet thickness.
- ✓ Can be flexibly attached to the frame in four directions.
- ✓ Tested CADDY Armour corrosion protection, class C4: long lasting protection - over 15 years.



Solar cable clip - simple and durable solution for professional installation

Twist cable tie

- ✓ Save time during installation with a single twist and without additional cutting tools
- ✓ Safe and strong self-cutting technology
- ✓ UV-resistant
- ✓ Protects your hands from scratches during use at work
- ✓ Tensile strength: 23 kg



Twist cable ties - efficient and cheap installation

for professional installation

Stainless steel saddle for the S-5!® E-clamps

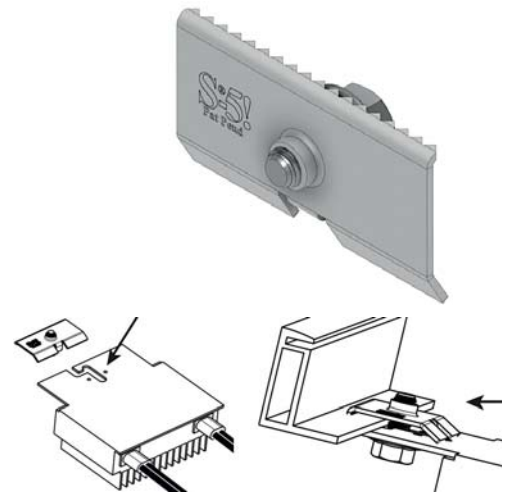
The stainless steel RoofTech E-Saddle creates a separation between the double standing seam of the copper roof and an aluminum S-5!® E-clamp, E-Mini or E-Mini-FL and thus prevents electrochemical corrosion. This is a cost-effective alternative to the S-5!® B terminals made of brass.



S-5!® MLPE Mount™ clip for mounting micro inverters and DC power optimizers on the inner module frame.

This is a cost-effective and flexible alternative to existing mounting solutions.

- ✓ Stainless steel material - very stable and corrosion-resistant.
- ✓ Simple and flexible installation with an M8 stainless steel screw.
- ✓ Can be installed on the module frames of most manufacturers.
- ✓ Serrated edges secure and ground the optimizer at any point on the module frame.



Adapter plates for flexible mounting of rail systems with the S-5!® Clamps.

Adapter plates can be combined flexibly and economically with the S-5!® clamps for mounting rail systems with bottom or side screw channels.



Adapter Plate V2A 80 x 30 mm.



Angle- / L-Adapter Alu 38 + 58 mm.



Angle Adapter Alu mounted on S-5!® E-Mini Clamp.

Your reliable and professional partner



Extensive warehousing and delivery capability

We work closely with our partners/manufacturers so that we can offer you a suitable solution for your project at any time. We keep large quantities of the products in stock for you so that we can guarantee fast order and dispatch processing.

Fast order and dispatch processing

It is particularly important to us that we offer you smooth order and shipping processing. In addition to digital options, we continue to rely on personal contact and have been at your side for more than 15 years, both professionally and in an advisory capacity.

Together with our shipping service providers, we try every day to deliver the goods to you or your customers safely and punctually at the agreed time. Digital feedback on the status of the order is part of our service, along with the option of choosing different shipping options.

Short-term shipping throughout Europe

We can offer you same-day shipping (fast lane) if you send us your order in the morning. You also have the option of collecting the products from our warehouse yourself or we can deliver the goods directly to your construction site by the next working day with express delivery.

The respective installation instructions must be observed for the applications and installation of the products (please request if necessary). The suitability of the products for the intended use is checked by the buyer and user themselves. In the event of non-observance of our installation instructions, when installing or assembling our products with components of the competition and when using and combining further components which were not purchased from us, we shall not be liable for any resulting defects and damage. The warranty is excluded in this respect. The information provided in our documents and the drawings and photos shown serve to clarify individual details and are only recommended information. RoofTech GmbH and the producers do not accept any further liability from this. Descriptions, pictures and drawings may represent development stages that are not available in this form. RoofTech GmbH and the manufacturers do not accept any responsibility for the installation, suitability, effect and applications or any further liability. The contents of our documents are protected by copyright. S-5!® products are protected by international patents.

RoofTech GmbH
Benzstraße 21
D-71101 Schönaich

Phone: +49 (0) 7031 76965-20
E-Mail: office@rooftech.de
www.rooftech.de

