



# S-5!®

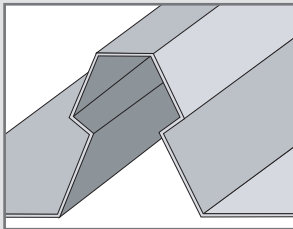
The Right Way!®

The S-5-K Grip™ eliminates the large moment arm and features a low mounting surface area with the mounting bolt directly over the center of the seam, which dramatically increases the strength of the clamp.

The **S-5-K Grip** and **S-5-K Grip Mini** clamps are each furnished with the hardware shown to the right. A structural aluminum attachment clamp, the S-5-K Grip is compatible with most common metal roofing materials excluding copper. All included hardware is stainless steel. Please visit [www.S-5.com](http://www.S-5.com) for more information including CAD details, metallurgical compatibilities, and specifications.

The S-5-K Grip clamp has been tested for load-to-failure results on a variety of standing seam roof profiles from leading panel manufacturers. The independent lab test reports found on our website at [www.S-5.com](http://www.S-5.com) prove that S-5!® holding strength is unmatched in the industry.

## Example Profile



## Profiles

### S-5-GX 10 or S-5-GX 10 Mini

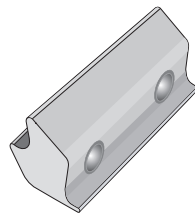
- LYSAGHT KLIP-LOK® 406
- McElroy Metal Mirage
- AEP Span Klip-Rib®
- Metal Sales Clip-Loc
- SpeedDeck® SpeedDeck®
- Safintra Saflok 410
- Safintra Saflok 700
- And other similar profiles

### S-5-GX 50 or S-5-GX 50 Mini

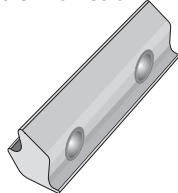
- LYSAGHT KLIP-LOK Classic® 700
- LYSAGHT KLIP-LOK 700 Hi-Strength®
- Stramit Speed Deck Ultra®
- Fielders KingKlip® 700
- And other similar profiles

If you have a profile not listed here, please contact S-5! to request a sample for test

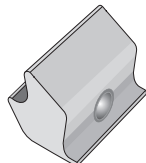
## Insert Options



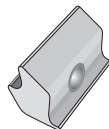
S-5-GX 10 Insert



S-5-GX 50 Insert



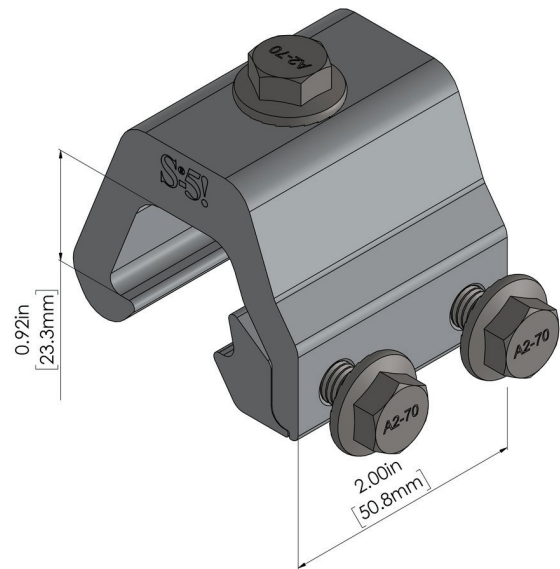
S-5-GXM 10 Mini Insert



S-5-GXM 50 Mini Insert

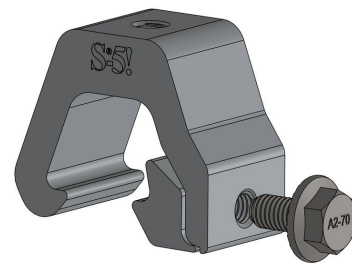
## S-5-K Grip

(With S-5-GX 10 Insert)



## S-5-K Grip Mini

(With S-5-GX 10 Mini Insert)



Please note: All measurements are rounded to the second decimal place.

**S-5!® Warning! Please use this product responsibly!**

Products are protected by multiple U.S. and foreign patents. For published data regarding holding strength, fastener torque, patents, and trademarks, visit the S-5! website at [www.S-5.com](http://www.S-5.com).

Copyright 2021, Metal Roof Innovations, Ltd.  
S-5! aggressively protects its patents, trademarks and copyrights. Version 081321..

The K-Grip-Clamp and K-Grip-Mini are not on the RoofTech stock available but can be shipped from S-5!, USA, after customer request – even in small quantities and in short time with air freight. Please call us for quote

RoofTech GmbH Benzstraße 21

Phone: +49 (0) 7031 769652-0

71101 Schönaich, Germany Email: [office@rooftech.de](mailto:office@rooftech.de) [www.rooftech.de](http://www.rooftech.de)



No liability for printing errors. Technical changes subject to modification. © Copyright RoofTech GmbH 2023. All rights reserved,