

e.g. for mounting rail systems with bottom or side screw channel on the S-5!® clamps with M8 thread.

## Adapter Plate V2A

Material: 5mm stainless steel A2  
Length: 80mm, width: 30mm  
Round hole: M11, oblong hole: 40mm x 11mm  
PU: 100 pieces per box  
Price: up from 1,20 €/piece (plus shipping costs + VAT)

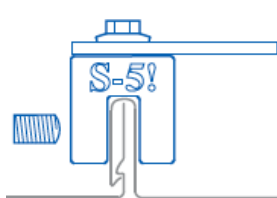


## Angle- / L- Adapter Alu

Material: 6.25mm aluminium (EN AW 6036 T6)  
Flanges: 38mm and 58mm long, 40mm wide  
2 M9 oblong holes: 20mm + 40mm  
PU: 100 pieces per box.  
Price: up from 1,70 €/piece (plus shipping costs + VAT.)



If an M8x16 stainless steel screw with locking teeth is used in the top M8 thread of the S-5!® clamp, it must be tightened to a torque of 18 Nm. For applications and mounting with S-5!® clamps, the respective mounting instructions must be observed.



E-Mini



S-Mini



Z-Mini



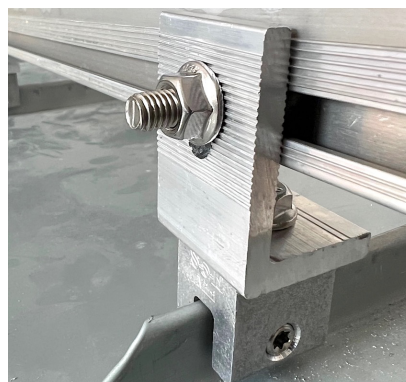
N-Mini



N1.5-Mini



R465-Mini



The planner and user himself checks the suitability for the intended use. The material properties of the metals assembled and the combination with each other must be checked and observed in advance. In the event of non-observance of our assembly instructions, when assembling or combining our products with components of the competition and when using and combining further components which were not purchased from us, we shall not accept any liability for any resulting defects and damage. The warranty is excluded in this respect. As a matter of principle, RoofTech GmbH, S-5!® Metal Roof Innovations Ltd. and the other producers of our distributed products do not assume any responsibility for the assembly, suitability and applications or any further liability.

For further information and installation instructions, please visit [www.rooftech.de](http://www.rooftech.de) or contact us.