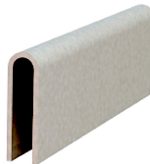


Stainless-Steel Saddle for Copper Roofs

Product Information and Installation Instructions



On copper roofs, aluminium clamps are not allowed to be mounted directly on the seam due to electrochemical corrosion. For this reason, clamps made of brass, such as the S-5!® B-Clamp or B-Mini (or those made of stainless steel) must be used on these roofs.

The stainless steel RoofTech E-Saddle creates a separation between the seam of the copper roof and an aluminium S-5!® E clamp, thus preventing electrochemical contact corrosion. The group of S-5!® E-clamps can thus be used in conjunction with the E-Saddle on copper roofs with double standing seam up to max. 5mm seam thickness. This is an imperfect but cost-effective alternative.

Product name: **E-Saddle**

to insert between Copper roof with double standing seam and S-5!® E-Clamp, E-Mini or E-Mini-FL.

Material: 0,5mm Stainless Steel

Length: 65mm

Wide: ca. 6mm

Weight: 11 gr / pcs.

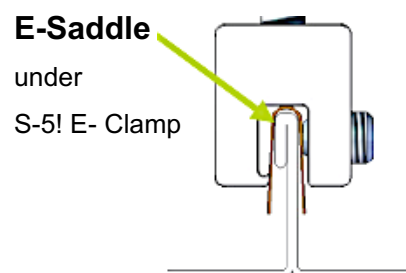
Packed with 100pcs. or

500 pcs. per box.



Please note following when installing S-5!® E-Clamps with the E-Saddle:

- Place the E-Saddle flush on the Copper double standing seam.
- Then place the S-5!® E-clamp flush on the saddle so that the “nose” of the clamp grabs under the seam (see the drawing right).
- **Then tighten the setscrew(s) of the clamp using the S-5! screw gun bit tip with a tension of 20Nm.**
- Setscrews should be tensioned and re-tensioned as the seam material compresses, i.e. tighten the first setscrew, then the second; then repeat until each setscrew achieves the recommended torque.



Please note additional the installation instructions of the S-5!® E-Clamps and the following:

Assumption is that the determination has been made that the roof to which the S-5! clamps will be attached is structurally adequate. Any loads imposed on the S-5! clamps will be transferred to the panels. Panel seams must have sufficient flexural strength to carry these loads. Panels must also be adequately attached to the building structure, and the structure must be sufficient to carry these loads. The makers and distributor of S-5! clamps make no representations with respect to these variables. It is the responsibility of the user to verify this information, or seek assistance from a qualified design or structural professional, if necessary. The user and/or installer of these parts is responsible for all necessary engineering and design to ensure the S-5! clamps have been properly spaced and configured.

The E-clamps may hinder the thermally elongation of the profile if, despite the high clamping point of the E-clamps, the foot of a sliding clip extends into the clamping area of the clamp. Then the E-clamps must be placed at a distance of 25mm from the sliding clips.

The installation of our products should only be carried out by qualified and professional specialists with experience in installing on roofs. The user and/or installer bears also the responsibility not only for the professional installation, but also for the roof on which he is mounted. The user and/or installer must always clarify in advance the application possibilities and application of our products in connection with the other used materials and products at the single project.

In case of non-observance of our installation instructions and in case of use and combination of further components not purchased from us, we do not assume any liability for resulting defects and damages. The warranty is excluded in this respect. The responsibility for the assembly and the applications is in principle not accepted from RoofTech GmbH, S-5!® - Metal Roof Innovations Ltd. and the producer of our other products. S-5! products are protected by international patents of Metal Roof Innovations, Ltd..

Installation instructions and more information you will find on our homepage: www.rooftech.de or send us a request.

RoofTech GmbH

Merklinger Str. 30

Phone: +49 7033 3034990

D - 71263 Weil der Stadt, Germany

Email: info@rooftech.de

www.rooftech.de

