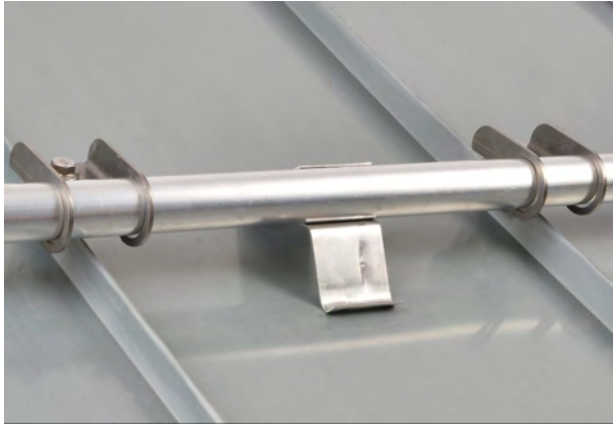


RoofTech Holder Type B for single tube snow retention



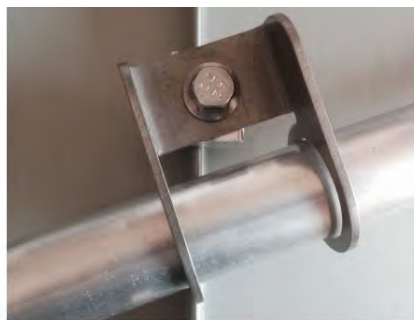
Snow guard with the RoofTech Single-Tube Holder Type B - mounted on the S-5!® Mini Clamps - is the classic snow guard with a standard 32/2 mm round tube. It is different from other snow guards on the market because of its simple installation, the high holding strength and attractive appearance.



- Visually appealing and stable tube holder made of 2.5mm stainless steel V2A.
- Penetration-free mounting with all S-5!® Mini clamps - also with B-Mini for copper roofs.
- The snow guard pipe lies optimally directly on the seam.
- Free sliding of the tube in the holder: No constraints across the seam.
- Ice stopper optionally available and recommended.



Quick and easy installation on S-5! E-Mini clamp



An oblique mounting is also easy possible.



Good looking application with the S-5! Z-Mini



The Single-Tube Holder Type B made of stainless steel can be mounted on all S-5!® Mini clamps. This often allows significantly higher loads to be absorbed than with conventional snow guards.

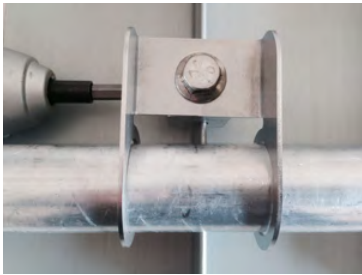


Snow guard with RoofTech Single Tube Holder Type B on S-5!® E-Mini clamps. Colour-coated, visually discreet and diagonally installed.



Snow guard on round bulb seam roof with RoofTech Single Tube Holder Type B on S-5!® Z-Mini clamp. Very stable and discreet .

A professional snow guard is used for traffic safety and protects pedestrians and objects from falling snow and iceloads. The dimensioning and design of a snow guard system depends on the building use and location as well as the roof shape and pitch. The responsibility for this always remains with the builder or building owner. RoofTech GmbH and S-5!® - Metal Roof Innovations Ltd. generally recommend that the snow guard system is planned and dimensioned by a qualified professional.



RoofTech Single Tube holder Type B fixed on S-5!® Mini clamps and with ice stopper



Strong and visually attractive snow retention with standard 32/2mm tubes.



Even an oblique snow guard installation is easy possible.



The stainless steel RoofTech Single-Tube holder Type B can be fixed on all S-5!® Mini-clamps (also B-Mini for copper roofs!).

To prevent ice or snow slabs from sliding off, we recommend to install ice stoppers.

Installation:

- Loosely pre-mount the Single Tube Holder Type B with the M8 stainless steel screw on the S-5!® Mini Clamps suitable for the type of seam and thread it onto the snow guard tube (max. diameter 32mm).
- Position the Single Tube Holder correctly on the seam using the S-5! Mini clamp and tighten the set screw of the Mini clamp with a tightening force of 15-17 Nm. Please observe the installation instructions for the used S-5!® Clamp.
- For some profiles and clamps, the mounting must not be carried out on the clips or holders!
- Finally fix the Single Tube Holder by tightening the M8 stainless steel screw with 30 Nm on the S-5!® Mini clamp.
- Each tube must be fixed to one holder to prevent it from moving sideways. To do this, screw a sheet metal screw into the tube in the middle of the both tube lugs of the holder.
- Between the tubes (max. 3m long) in a row, a sufficient distance must be provided for the thermally induced change in length of the pipes.
- To prevent ice or snow slabs from slipping off, additional ice stoppers (1 to 2 per share, spacing 30cm) should be mounted between the pipe and the roof cladding (available as accessories).

Please note in general:

Please follow local legal and official requirements for snow retention! Depending on the roof pitch, height above sea level or snowiness, suitable snow guard systems are prescribed and must be calculated and designed professionally. With the snow guard system, the push effect of the snow lying on the roof is to be prevented by one or more rows of snow guards covering the entire area. The decision on the dimension and design of a snow guard system depends on the use and location of the building, and responsible therefor is always the owner of the building. In case of doubt, a structural engineer should be consulted to determine the loads and the dimensioning of the snow guard system.

Assumption is that the determination has been made that the roof to which the snow retention and the S-5! clamps will be attached is structurally adequate. Any loads imposed on the snow retention and S-5! clamps will be transferred to the roof panels. Panel seams must have sufficient flexural strength to carry these loads. Roof panels must also be adequately attached to the building structure, and the structure must be sufficient to carry these loads. The makers and distributor of the RoofTech products and the S-5! clamps make no representations with respect to these variables.

It is the responsibility of the user and/or installer to verify this information. RoofTech GmbH and S-5!® - Metal Roof Innovations Ltd. generally recommend that the snow guard system is planned and dimensioned by a qualified professional. The user and/or installer of these parts is responsible for all necessary engineering and design to ensure the snow retention and S-5! clamps have been properly spaced and configured. Due to the many variables involved with specific products, climates, snow fall and melt phenomena, and job particulars, the manufacturer and supplier cannot and does not express any opinions as to the suitability of any RoofTech- and S-5!- assembly for any specific application and assumes no liability with respect thereto.

The lowest snow guard row should generally be installed about 20 to 25 cm from the edge of the eaves. If additional rows of snow guards are provided, the roof surface should be divided into sections of approximately equal size in order to achieve an even load and the best possible effectiveness.

The material properties of the respective metals, the combination with each other and the installation instructions and regulations of all manufacturers involved (including those of the metal roof) must be observed.

The user and/or installer bears also the responsibility not only for the professional installation, but also for the roof on which he is mounted. The user and/or installer must always clarify in advance the application possibilities and application of our products in connection with the other used materials and products at the single project. The snow guard systems are not suitable as fall protection.

Please note always the installation instructions of the S-5! Clamps (included in every product box). The instructions and more information to download on our homepage: www.rooftech.de. The photographs and drawings herein are for the purpose of illustrating installation, tools and techniques, not system designs.

The responsibility for the assembly and the applications is in principle not accepted from RoofTech GmbH und S-5!® – Metal Roof Innovations Ltd..