

# Clamps from S-5!®

## and their Application Options



S-5!® has developed innovative clamps and brackets for various international metal roof profiles. S-5!® clamps will be attached to the panel seam by the special tightening “bullet-nosed” stainless steel S-5! setscrews. They will “dimple” the seam material, but will not penetrate it.

In contrast to plagiarism and conventional seam clamps, only the *original* S-5!® Clamps are all multiple tested on different materials and profiles by a third-party accredited US-lab. The S-5!® Z- and E-Clamps families have in addition the official technical approval by the DIBt (Authority of the German Government).

Since 2008 RoofTech has been the S-5!® Master Distributor in Europe and sells and stocks the S-5!® products that are common in the European market.



- ✓ Universally applicable for various installations
- ✓ Simple, fast and penetration-free mounting
- ✓ High load capacities in all load directions
- ✓ Extensively tested holding strenght
- ✓ S-5!® E- and Z- Clamps approved by the building authorities: DIBt Z-14.4-719

With the S-5!® clamps you can fix almost anything to standing seam roofs - safe and durable.

Master Distributor in Europe:

**RoofTech GmbH**  
Merklinger Str. 30  
D-71263 Weil der Stadt, Germany

Phone: +49 7033 3034990  
Email: [info@rooftech.de](mailto:info@rooftech.de)  
Web: [www.rooftech.de](http://www.rooftech.de)





# Snow Retention Systems with S-5!®

## ColorGard® - Snow Retention in the Colour of the Roof

S-5!® ColorGard® is the snow guard system which perfectly matches with the colour of almost each metal roof. This is done by the insertion of a strip of roof material into the ColorGard®-rail thus avoiding expensive costs for coating when the snow guard shall be coordinated with the colour of the roof.

Mounted on S-5!® Clamps ColorGard® can support higher loads than other systems. In many cases you will need less clamps or rows for ColorGard®.



Photo: Rheinzink

- ✓ Snow Retention in the colour of the roof
- ✓ For high snow loads
- ✓ Oblique mounting possible
- ✓ SnoClip with rubber foot

## RoofTech Single- and Double Tube Snow Retention

Snow guard with the RoofTech single pipe holder type B made of stainless steel - mounted on the S-5!® Mini clamps suitable for the standing seam - is the classic snow guard with a standard 32/2 mm round pipe. It differs from other snow catches on the market due to its easy installation and attractive appearance. Even a sloping snow guard can be easily realised with it.

Some objects require an extra high snow guard. The RoofTech double pipe holder made of stainless steel for two 32 mm pipes is mounted on two S-5!® mini clamps, which thus provide a very stable hold on the seam. Depending on the type of rebate the upper pipe is 16 - 20 cm above the roofing.



Single-tube holder type B - very stable, visually appealing and also mountable oblique.



Double Tube holder strong fixed on S-5!® E-Mini clamps

- ✓ Visually appealing
- ✓ Durable and stable fastening on the S-5!® Mini clamps
- ✓ Material stainless steel
- ✓ Also suitable for copper roofs
- ✓ Ice stopper optionally available

## Further Application Possibilities with S-5!® Clamps



With the clamps of S-5!® various installations can be mounted easily and permanently stable on standing seam metal roofs.



## Rail Systems perfect mounted with S-5!® Clamps

S-5!®'s standard and Mini clamps continue to be the attachment choice of worldwide popular rack and rail solar systems. The Mini-Clamps from S-5!® provide sufficient holding strength to install rail-systems on many types of standing seam metal roofs without penetrating the panels.

To mount rail-systems with the screw channel located on the underside, the approved E-Mini-FL and Z-Mini-FL clamps with flange are the right choice. The hammer-head bolts can be fixed quickly and securely through the 18x11mm hole in the flange. The S-5! Mini Clamps without flange can be easily combined with different adapter plates.

C-shaped rails or rails with a side screw channel that are fastened with a angle adapter plate, the S-5!® Mini-Clamps with the M8 threaded hole on top and a M8 stainless steel screw are a simple and stable mounting option.



Rail systems fixed with S-5!® E-Mini-FL on a double folded seam roof and with N1.5-Mini on a Nailstrip seam roof.



Rail with bottom channel fixed on the S-5!® E-Mini-FL (with Flange)



C-rail mounted on S-5!® Z-Mini for round bulb seams



Rail with side screw channel fixed with an angle adapter on S-5!® Z-Mini

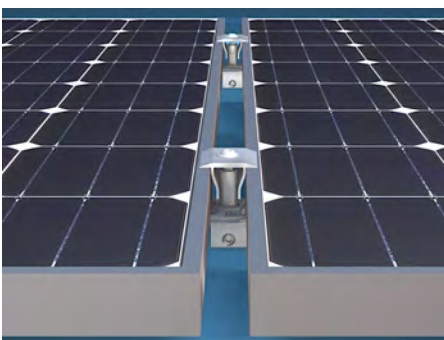
## S-5!® PV-Kit 2.0 - Direct-Mounting without Rails

With the S-5!® PV-Kit 2.0 you can fix solar modules with frame height from 30mm - 46mm directly without using rail-systems. The stainless steel module support disc of the PV-Kit 2.0 has optimized teeth which enable the grounding of the modules. Therefore, no straps or wires are required between the modules.

- Easy transport, no cuttings or unusable remains.
- Pre-assembled MidGrab module clamp saves time and money.
- Flat screw head provides a smooth and clean surface.
- Less wind loads due to roof-parallel mounting of the modules.
- Only one module is fixed crosswise to the seams – therefore less cross-movements and stresses for the metal roof.
- Universally applicable on many different metal roofs with the S-5!® Mini Clamps and the Multi-Trapezoidal Bracket MTH.



S-5!® PV-Kit 2.0 MidGrab fixed on S-5!® Mini-Clamp



Roof-parallel installation, crosswise to the seam, with the S-5!® PV-Kit 2.0 MidGrab and E-Mini on a double standing seam roof: universally usable as or and middle clamp.

# Clamp Assortment 2021



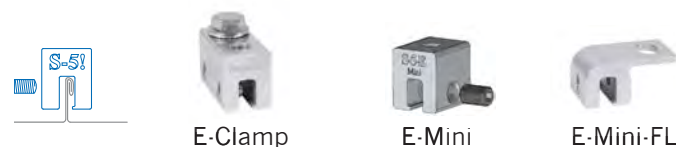
The S-5!® Clamps come in a variety of options with M8 thread on top and a M8 Stainless Steel bolt or with flange. The normal S-5!® clamps with two bullet-nosed, stainless steel set screws for attachment to the seams are used for heavy demands e.g. fall protection systems and in the ColorGard® snow retention.

The S-5!® Mini-Clamps with one set screw are used at applications where rigid objects, such as rails, fixed to the seams with multiple clamps. **From 2021, the S-5!® Mini clamps will be supplied without M8 stainless steel screws. These can then be ordered separately. See: [www.rooftech.de](http://www.rooftech.de)**

## S-5!® E-Clamps for Double Folded Seams

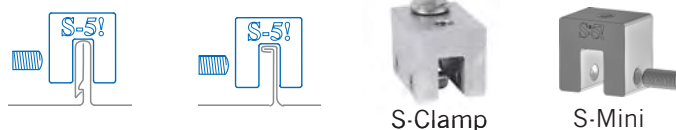
For double folded standing seam roofs made of aluminium, titanium-zinc, stainless steel or coated galvanized steel.

**Official approved by the DIBt.: Z-14.4-719.**



## S-5!® S-Clamps for Snap Lock and Angle Seams

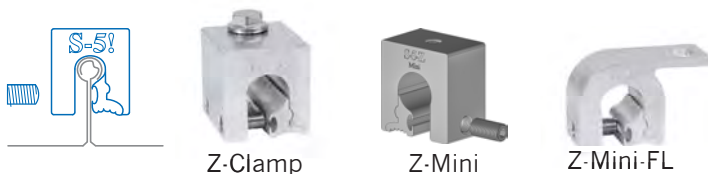
With a bigger opening slot of 14mm the S-Clamps are extremely versatile for a big number of industrial seams such as Snap-Lock or Snap-together profiles from Fischer-Kliptec, Schleibach, Prive-Stylinov, Ruukki or similar. As well for standard angle seams.



## S-5!® Z-Clamps for Round Bulb Seams

Z-Clamps are specially developed to fit profiles having round "bulb" seams with a max. 23mm diameter such as roofs of Kalzip®, Bemo®, Aluform, Euroseam® or Kingspan.

**Official approved by the DIBt.: Z-14.4-719.**



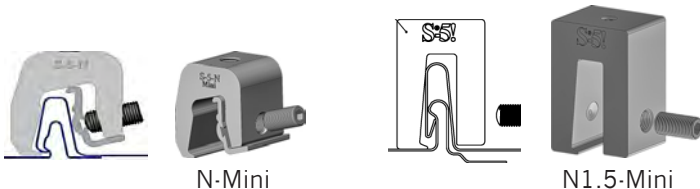
## S-5!® B-Clamps for Copper Roofs

The B-clamps with an opening slot of 6mm are designed for Copper double-folded standing seam roofs. The B-Clamps, made of Brass, allows material compatible installations.



## S-5!® N-Mini and N1.5-Mini Clamps for Nail Strip Seams

The N-Mini clamp was designed for applications on 1" (25mm) high and the N1.5-Mini clamp for 1.5" (38mm) high nail strip profiles and metal roof types with similar profiles.



**Multi-Trapezoidal Bracket MTH** with self-adhesive sealing strips and mounting bracket with slotted hole M10. Material: stainless steel. For mounting on many different trapezoidal sheet metal and sandwich profiles up to 43mm top chord width. **Official approved by the DIBt.: Z-14.4-706.**



We stock the above S-5!® Clamps that are common in the European market. All not stocked S-5!® products can be imported from S-5!® USA, after customer request – even in small quantities and in short time with air freight. Please call us for quote.

Master Distributor for Europe:

**RoofTech GmbH**  
Merklinger Str. 30  
D-71263 Weil der Stadt, Germany

Tel.: +49 7033 3034990  
Email: [info@rooftech.de](mailto:info@rooftech.de)  
Web: [www.rooftech.de](http://www.rooftech.de)

