

With the **S-5!® PV-Kit 2.0 MidGrab**, framed PV modules can be mounted - without rail systems - parallel to the roof and across the seam on a wide variety of metal roofs. The PV-Kit 2.0 MidGrab has a module support disc made of stainless steel. The module clamp of the PV-Kit 2.0 is pre-assembled and can be **used as middle or end clamp**. Mounting is carried out with the respective S-5!® Mini clamps or the Multi-Trapezoidal Holder MTH.



**Solar Cable Clip**, of steel, with corrosion protection.



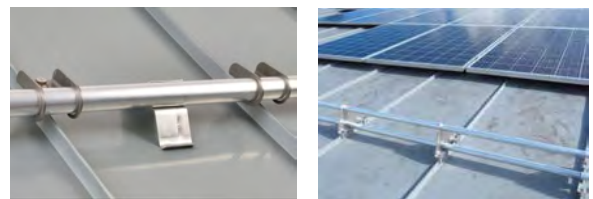
**CADDY Tool-Free Flat Roof Support** for professional installation of cable trays and pipes



**BirdBlocker, 12,5cm and 20cm high**, to protect the solar installation against nesting birds.



**S-5!® ColorGuard** is the very stable snow guard system in the colour of the roof. Mounted, also diagonally, with the S-5!® Clamps with two set screws.



**RoofTech Single and Double Tube Holder**, stainless steel, for snow guards with 32mm tubes. Mounting on S-5!® Mini.