

## Installation Instructions

**S-5!<sup>®</sup> Warning!** Please use these products responsibly! Visit our website or contact your S-5! distributor for available load test results. The user and/or installer of these parts is responsible for all necessary engineering and design to ensure the S-5-K Grip<sup>™</sup> has been properly spaced and configured.

**Notice to S-5! product users:** Due to the many variables involved with specific panel products, climates, snow melt phenomena, and job particulars, the manufacturer cannot and does not express any opinions as to the suitability of any S-5! assembly for any specific application and assumes no liability with respect thereto. S-5! products are tested for ultimate holding strength on various profile types and materials. This information is available from the S-5! website: [www.S-5.com](http://www.S-5.com). This document is an installation guide only and the photographs and drawings herein are for the purpose of illustrating installation tools and techniques, not system designs.

**The S-5-K Grip<sup>™</sup> clamp is designed to fit Klip Rib<sup>®</sup> and other bulb snap-together seams.**

The S-5-K Grip utilizes multiple inserts (sold separately) in order to accommodate a variety of bulb snap-together profiles. Each insert has a unique shape that allows for a tight fit and provides increased holding strength over other attachment options.

The appropriate seam profiles for each insert option are listed on the back of these installation instructions.

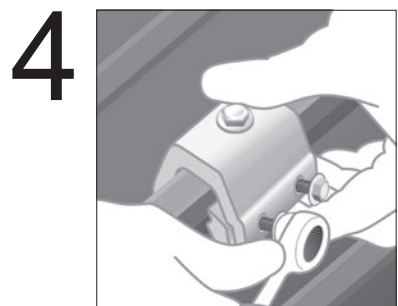
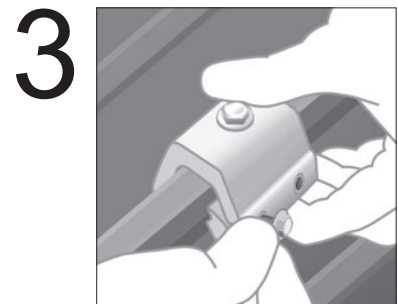
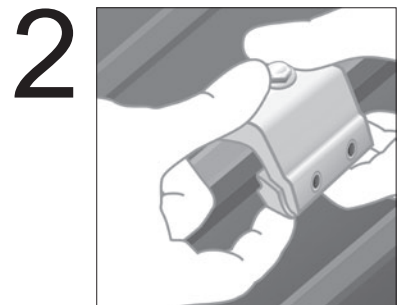
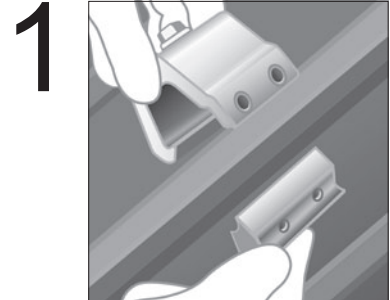
The head of the clamp's flanged bolts control the amount of compression, which reduces the possibility of over-compressing the seam, and makes installation a snap!

## Tools Needed

- Ratchet or Screw Gun with 13mm Hex

## To Install S-5-K Grip<sup>™</sup>

1. Position clamp insert at desired location along the rib, just under the fold of the rib.
2. Roll the clamp into position over the seam and clamp insert piece. Position the clamp so that it is centered over the clamp insert with approximately 2mm of insert overhang on each side of the clamp.
3. Partially thread the two flanged bolts into the base of the S-5-K Grip by hand, or the single flanged bolt into the base of the S-5-K Grip Mini. The bolts should engage the divots in each end of the S-5-K Grip insert and in the center of the S-5-K Grip Mini insert.
4. Tighten the bolts at the base of the S-5-K Grip using a ratchet or screw gun with a 13mm hex. For optimal holding strength, bolts should be tensioned to 200 in. lbs. For the S-5-K Grip Mini, tighten the single flanged bolt to the specified torque.

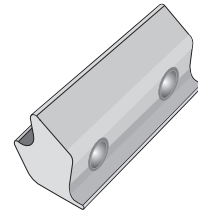


## Seam Profiles

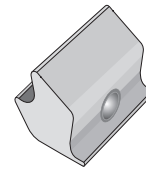
S-5-K Grip™ is designed to fit Klip Rib® and other bulb snap-together seams.

Seam profiles for the S-5-GX 10 insert with the standard clamp  
(or S-5-GXM 10 mini insert with the mini clamp):

- Lysaght Klip-lok® 406
- McElroy Metal Mirage
- AEP Span Klip-Rib®
- Metal Sales Clip-Loc
- SpeedDeck® SpeedDeck®
- Safintra Saflok 410
- Steeline Lokdek 680
- Steeline Steel-Rib 500
- Metroll Metlok 500®
- Domico GBS Domitec® Dach



S-5-GX 10 Insert

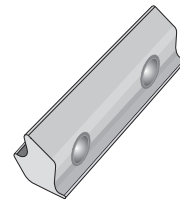


S-5-GXM 10 Mini Insert

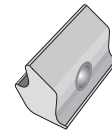
---

Seam profiles for the S-5-GX 50 insert with the standard clamp  
(or S-5-GXM 50 mini insert with the mini clamp):

- Lysaght Klip-lok Classic® 700
- Lysaght Klip-lok 700 Hi-Strength®
- Stramit® Speed Deck Ultra®
- Fielders KingKlip® 700
- Safintra Saflok 700
- Revolution Roofing Rev-Klip™ 700
- Metroll Metlok 700®



S-5-GX 50 Insert



S-5-GXM 50 Mini Insert

### S-5!® Warning! Please use this product responsibly!

S-5!® Warning! Please use this product responsibly! Products are protected by multiple U.S. and foreign patents. For published data regarding holding strength, fastener torque, patents, and trademarks, visit the S-5! website at [www.S-5.com](http://www.S-5.com).

Copyright 2013, Metal Roof Innovations, Ltd. S-5! products are patent protected. S-5! aggressively protects its patents, trademarks and copyrights.

These instructions are for use by those experienced in the trade. Always follow appropriate safety precautions and use appropriate tools.