

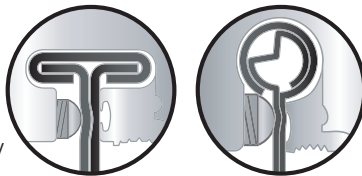
S-5!™

The Right Way!

Installation Instructions

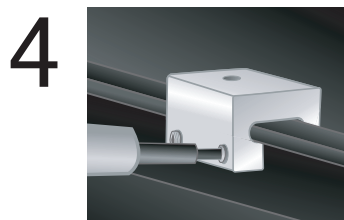
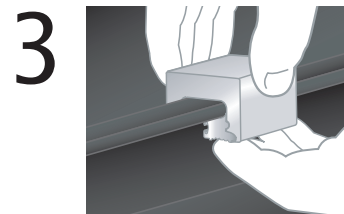
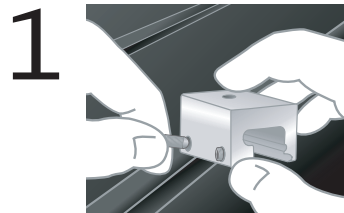
The S-5-Z and S-5-T clamps fit “bulb” and “T” shaped seams. Position clamp at desired location along seam with the bolt hole in the correct (upslope or downslope) orientation. Install by holding the small insert piece under the edge of the seam, then roll the clamp into position over the seam and insert. Tighten the setscrews at the base of the clamp using a screw gun and the included screw gun bit tip. For maximum holding strength, setscrews should be tensioned and re-tensioned as the seam material compresses. When relying on tested values, screw tension should be verified using a calibrated torque wrench between 130 and 150 inch pounds.

S-5!™ Warning! Please use these products responsibly! Visit our website or contact your S-5!™ distributor for detailed installation instructions and load test results. The user and/or the installer of these parts is responsible for all necessary engineering and design for the intended use of these parts in an assembly or application.



Copyright 2010, Metal Roof Innovations, Ltd. S-5!™ products are patented by Metal Roof Innovations, Ltd. Version 012510

Attach almost anything to standing seam metal roofs without piercing the panel!



S-5-T and S-5-Z Clamps

888-825-3432

www.S-5.com