

Installation Instructions

S-5!® Warning! Please use these products responsibly! Visit our website or contact your S-5! distributor for available load test results. The user and/or installer of these parts is responsible for all necessary engineering and design to ensure the S-5-R465 has been properly spaced and configured.

Notice to S-5! users: Due to the many variables involved with specific panel products, climates, snow melt phenomena, and job particulars, the manufacturer cannot and does not express any opinions as to the suitability of any S-5! assembly for any specific application and assumes no liability with respect thereto. S-5! products are tested for ultimate holding strength on various profile types and materials. This information is available from the S-5! website: www.S-5.com. This document is an installation guide only and the photographs and drawings herein are for the purpose of illustrating installation tools and techniques, not system designs.

The S-5-R465 and S-5-R465 Mini clamps are designed to fit the Zambelli RIB-ROOF 465, McElroy Metal's Mirage II, Rib Roof Metal Systems' Rib Roof, and similar roof profiles.

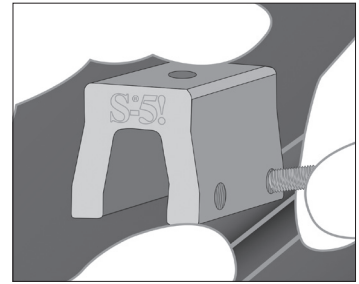
Tools Needed

- Torque Wrench
- Screw Gun

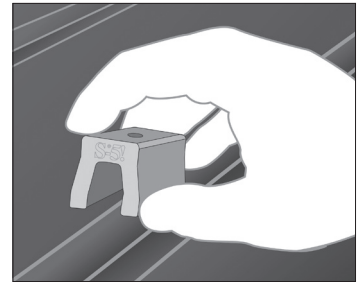
To Install S-5-R465

1. Partially thread the round-point setscrews into the clamp by hand.
2. Position the clamp at desired location along the seam with the bolt hole in the correct (upslope or downslope) orientation.
3. Use a screw gun and the included bit tip to tighten the two upslope setscrews until flush with seam wall. Next, tighten the two downslope setscrews until flush with seam wall.
4. Finally, tension and re-tension each of the four setscrews as the seam material compresses, i.e. tighten the first setscrew, then the second; then repeat until each setscrew achieves the recommended torque. Screw tension should be verified using a calibrated torque wrench between 160 and 180 inch pounds when used on 22ga steel and between 130 and 150 inch pounds for all other metals and thinner gauges of steel.

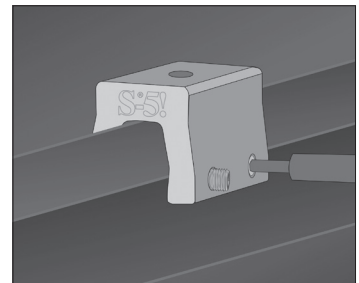
1



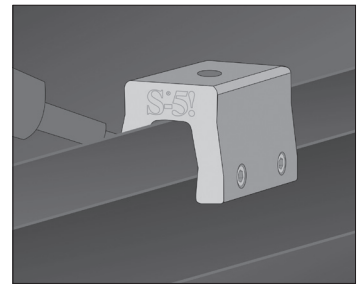
2



3

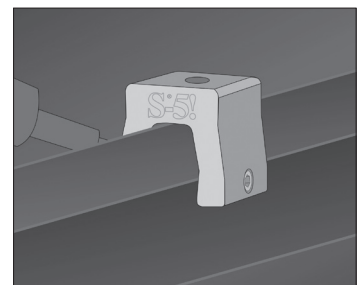
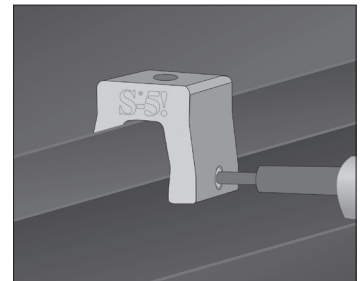
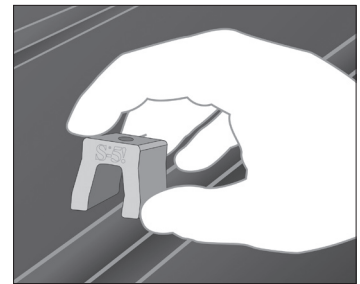
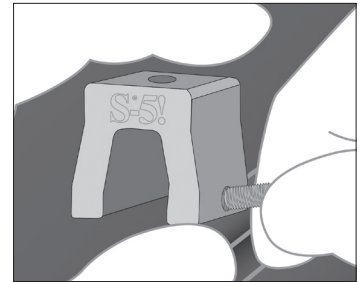


4



To Install the S-5-R465 Mini

1. Partially thread the setscrews into the clamp by hand.
2. Position the clamp at desired location along the seam with the bolt hole in the correct (upslope or downslope) orientation.
3. Use a screw gun and the included bit tip to tighten one setscrew until flush with the seam wall. Then tighten the other setscrew until flush with the seam wall.
4. Finally, tension and re-tension both setscrews as the seam material compresses, i.e. tighten the first setscrew, then the second; then repeat until each setscrew achieves the recommended torque. Screw tension should be verified using a calibrated torque wrench between 160 and 180 inch pounds when used on 22ga steel and between 130 and 150 inch pounds for all other metals and thinner gauges of steel.



S-5!® Warning! Please use this product responsibly!

Products are protected by multiple U.S. and foreign patents. Visit the website at www.S-5.com for complete information on patents and trademarks. For maximum holding strength, setscrews should be tensioned and re-tensioned as the seam material compresses. Clamp setscrew tension should be verified using a calibrated torque wrench between 160 and 180 inch pounds when used on 22ga steel, and between 130 and 150 inch pounds for all other metals and thinner gauges of steel. Consult the S-5! website at www.S-5.com for published data regarding holding strength.